



Anchor Lane, Hemel Hempstead, HP1 1TY

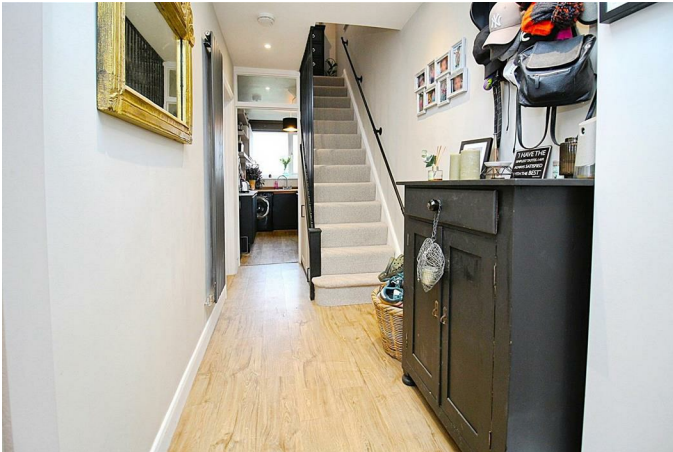
Offers Over £550,000

Located in the desirable area of Boxmoor in Hemel Hempstead, this charming semi-detached house presents an excellent opportunity for families and professionals alike. The property boasts three well-proportioned bedrooms, two reception rooms perfect for entertaining. This family home also offers excellent decorative order, off-street parking and a sought after location close to excellent local schools, amenities and transport links including Hemel Hempstead railway station with direct links to London Euston. VIEWING ESSENTIAL!

**FRONT DOOR TO :
PORCH AREA**



ENTRANCE HALLWAY



LOUNGE 12'5 x 10'7 (3.78m x 3.23m)



DINING ROOM 12'2 x 9'11 (3.71m x 3.02m)



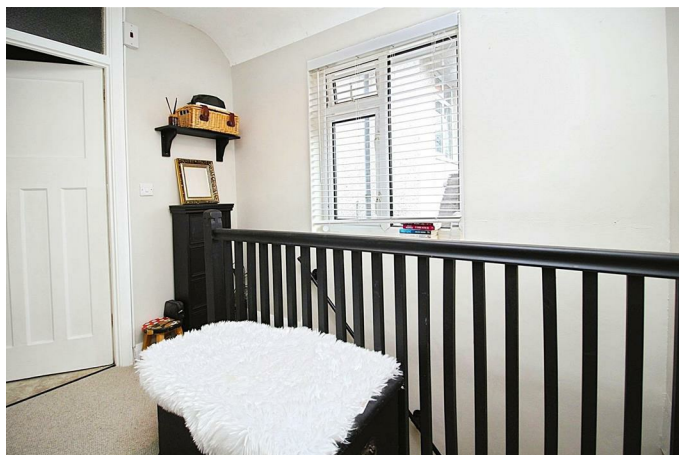
LEAN TO / CONSERVATORY 9'3 x 6'7 (2.82m x 2.01m)



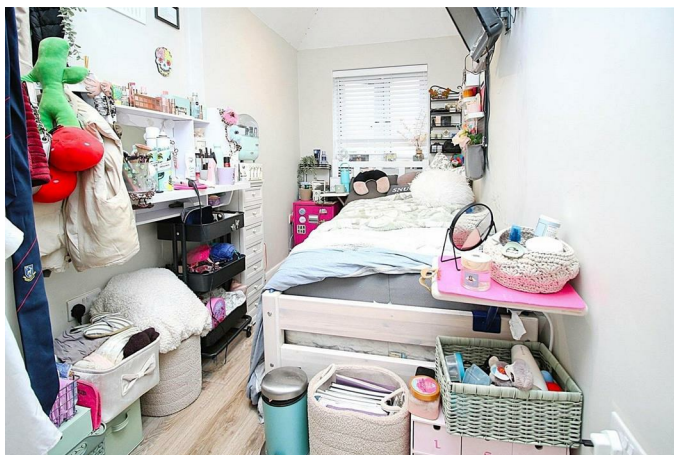
KITCHEN 11'5 x 5'1 (3.48m x 1.55m)



FIRST FLOOR LANDING



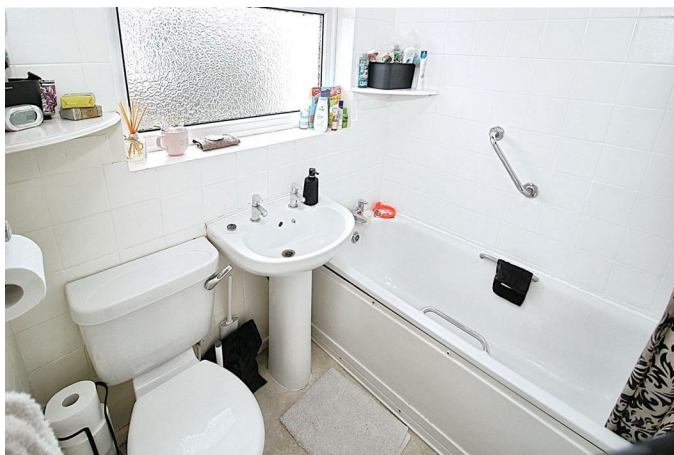
BEDROOM THREE 12'10" x 5'10" (3.93 x 1.80)



BEDROOM ONE 12'8 x 8'11 (3.86m x 2.72m)



BATHROOM



BEDROOM TWO 11'8 x 8'11 (3.56m x 2.72m)



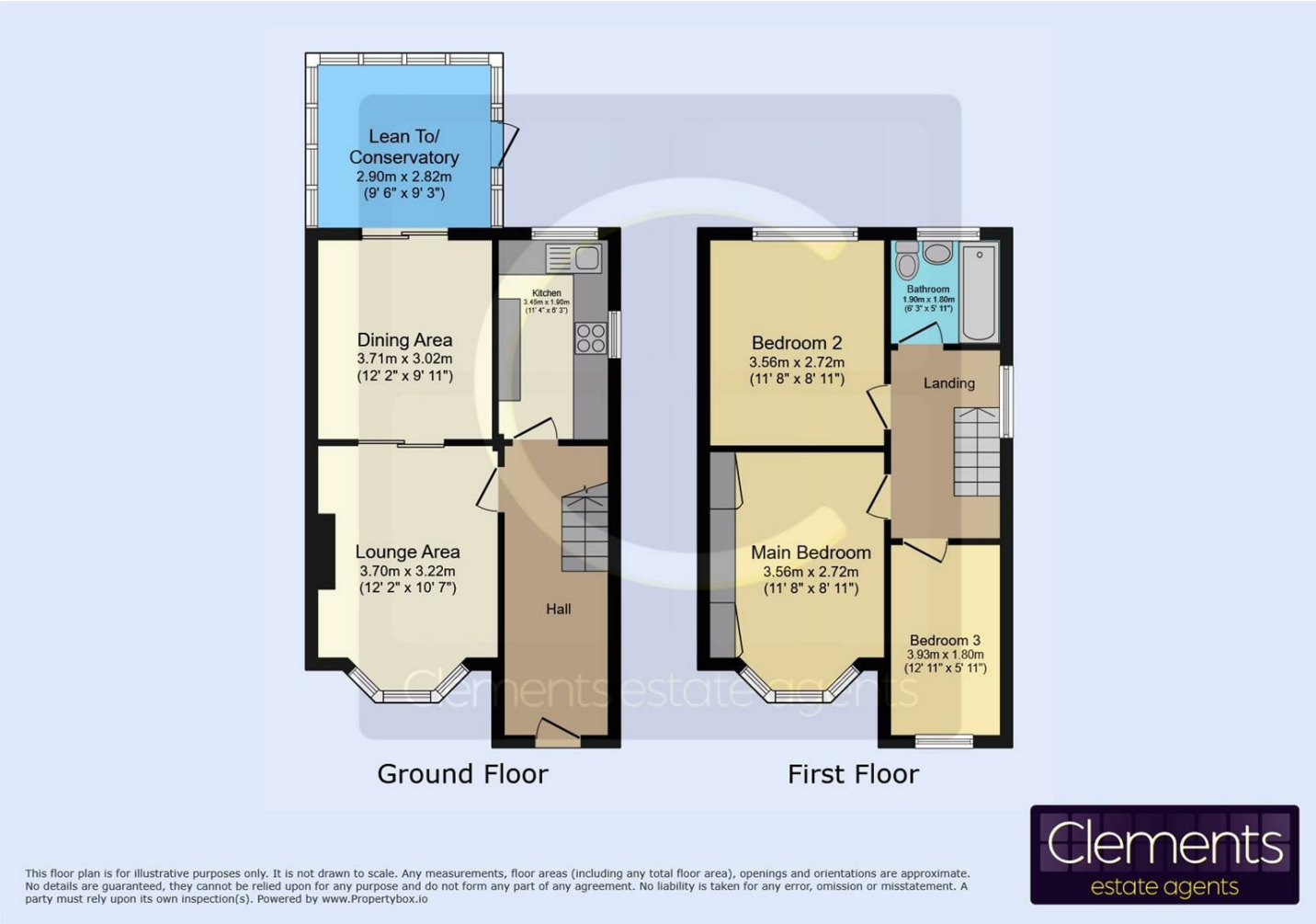
OUTSIDE

FRONT GARDEN

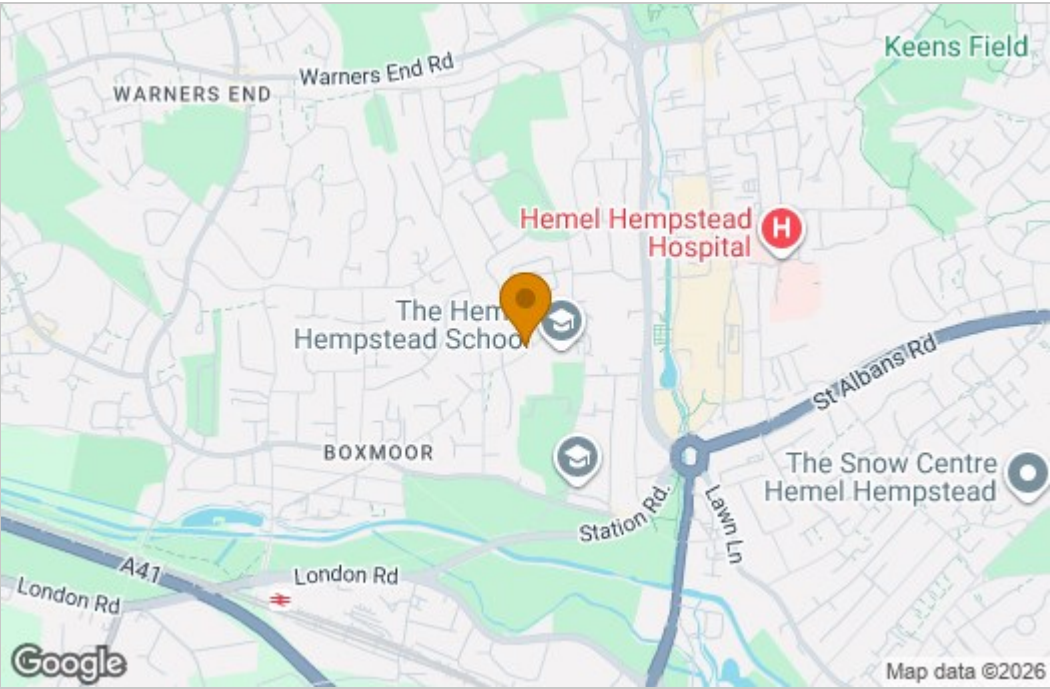
REAR GARDEN



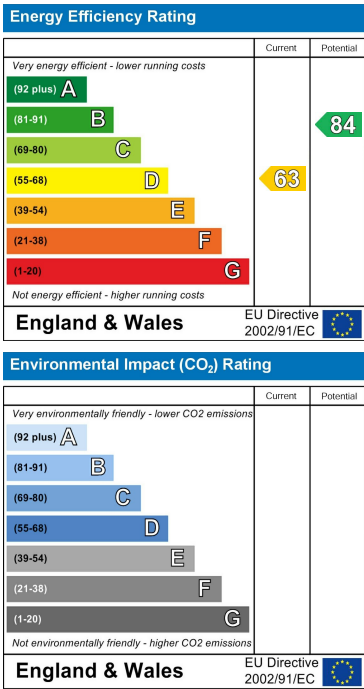
Floor Plan



Area Map



Energy Efficiency Graph



These particulars, whilst believed to be accurate are set out as a general outline only for guidance and do not constitute any part of an offer or contract. Intending purchasers should not rely on them as statements of representation of fact, but must satisfy themselves by inspection or otherwise as to their accuracy. No person in this firms employment has the authority to make or give any representation or warranty in respect of the property.